



Intelligent
USB Share Switch
USB-413/USB213
USER'S MANUAL

TABLE OF CONTENTS

INTRODUCTION.....	1
FEATURES.....	1
PACKAGE CONTENTS.....	2
APPLICATION DIAGRAM.....	3
TECHNICAL SPECIFICATIONS.....	4
SYSTEM REQUIREMENT.....	4
CABLE DIAGRAMS.....	5
PRODUCT DETAILS.....	5
LED INDICATION.....	6
HARDWARE INSTALLATION.....	6
SOFTWARE INSTALLATION.....	7
SOFTWARE UNINSTALLATION.....	12
USAGE.....	13
TROUBLESHOOTING.....	18
CERTIFICATES.....	19

Introduction

Thank you for purchasing the Intelligent USB Share switch. Intelligent USB Share Switch can save your COST, TIME, SPACE, EQUIPMENT and POWER.

Intelligent USB Share Switch allows multiple PCs to share multiple USB devices. First come first serve. Each time, only one PC can use the USB device ports. Intelligent USB Share Switch is accompanied with intelligent software, which located at icon tray, to manage the resources shared by multiple PCs. Each PC can view the USB device ports situation in real time from the ICON and sent out the request message to the other PC for releasing the USB device ports.

Normally, most of PCs have been built-in 2 to 4 USB down stream ports and each PC can easily has its own many private USB devices. But, it take a lot of cost on USB devices and the user might need a requirement to share your some of personal USB devices without going through hot plug process. Intelligent USB Share switch can reduce your efforts on hot-plug USB devices between PCs back and forth.

Intelligent USB Share Switch also supports extra 2 USB Hub ports to save your Hub cost. It integrated multiple PCs to share multiple USB devices and a USB hub all-in-one to save your extra cost.

Features

- Four or two PCs share a USB printer or the other USB devices
- Conform to USB REV1.1 Specifications
- Run USB dual speed --- 12Mbps and 1.5Mbps
- Support UHCI and OHCI USB interface
- Supports USB self power for more USB Hub expansion
- Using intelligent software to switch USB device ports and easy operation
- Handle some HP, Epson USB and IEEE-1284 printers under Auto print mode or software manual mode
- Auto Printer mode supports First Come First Serve
- The cable length from PC to USB share box or USB share box is 5 meters
- Built-in extra 2 port USB Hub and save a Hub expense
- Easy to share other expensive USB peripherals like USB to Wireless LAN adapter, USB to Bluetooth adapter, USB to IRDA adapter, USB docking station, USB Zip drive, USB card reader, USB to USB Bridge, USB to Ethernet or other USB adapters.

- Easy Extend USB down stream ports or add a 4 or 7 port USB Hub to one of USB device ports for more USB device connected to your PC.

Package Contents

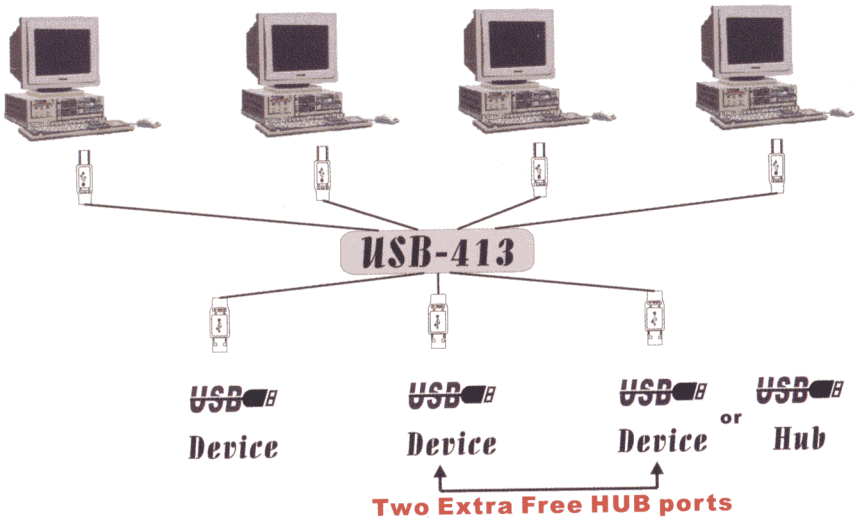
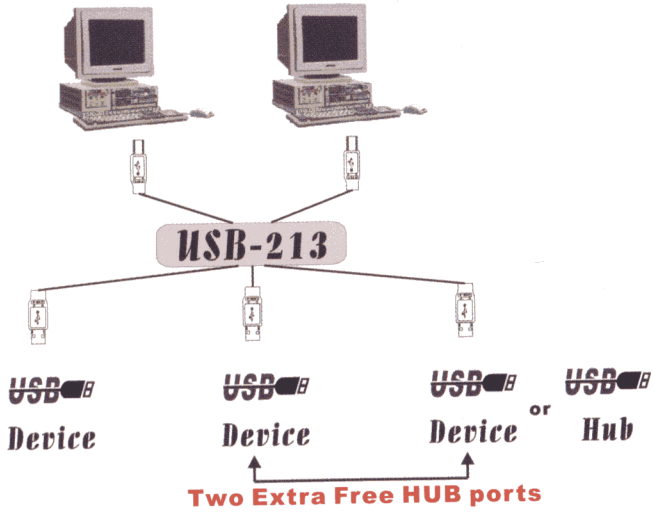
Model No.: USB-213

2 Port USB Share Switch	1 PCS
User's manual	1 PCS
CD-ROM Software (or Software Diskette)	1 PCS
AC to DC 12V, 1A Power Adapter	1 PCS

Model No.: USB-413

4 Port USB Share Switch	1 PCS
User's manual	1 PCS
CD-ROM software (or Software Diskette)	1 PCS
AC to DC 12V, 1A Power Adapter	1 PCS

Application Diagram



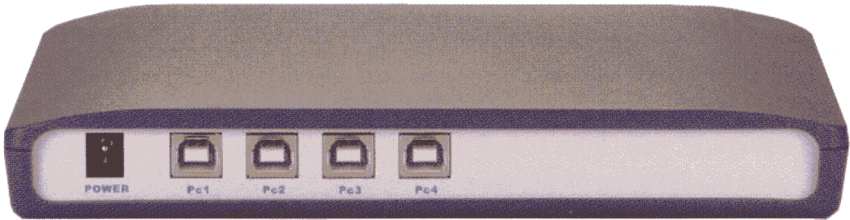
Cable Diagrams

USB A-B Cable:



Product Details

Front Panel & Rear Panel of USB413



Technical Specifications

Model No.	USB-213	USB-413
PC Port	2	4
PC Port LED	2	4
USB Device Port	3	3
PC Port Connector	USB Type B Receptacle	
USB Device port connector	USB Type A Receptacle	
USB device selection	Software / Auto*	
USB Device Port LED	3	
Hub Port	2 extra Hub ports	
Cable Length (meters)	5	
USB Power	Self	
Power Adapter	DC 12V, 1A	
Operation Temperature	0~40°C	
Storage Temperature	-20 ~ 60°C	
Emission	CE, FCC	
Humidity	0~80%, Non-Condensing	
Enclosure	Plastic	
Size	Desktop	
Dimension (cm)	20(L) X 11(W) X 2.5(H)	
Weight (g)	220g	280g

*Note: Auto selection mode is only for some HP / EPSON printers

System Requirements

Specifications:

Model No.	USB-213	USB-413
PC side	Two PCs with USB port Two USB A-B Cables	Four PCs with USB port Four USB A-B Cables
USB Device Side	Three USB devices like USB printer or the others with USB cables	Three USB devices like USB printer or the others with USB cables

Front Panel & Rear Panel of USB213



LED Indication

There are three kinds of LED on the front panel:

1. Power LED : When USB share switch is powered on, the red power LED is lit.
2. PC port LED : If one of PC ports is connected to the Hub ports, the green LED is lit. There is only one PC port LED is lit each time. When none of PCs uses three USB type A ports, all of PC LEDs are off (It means that none of PCs occupies the Hub ports).
3. Hub port LED : There are three LEDs to indicate the Hub is hooked to the PC.

Hardware Installation

Before installation, please make sure all of peripherals and computers have been turned off .

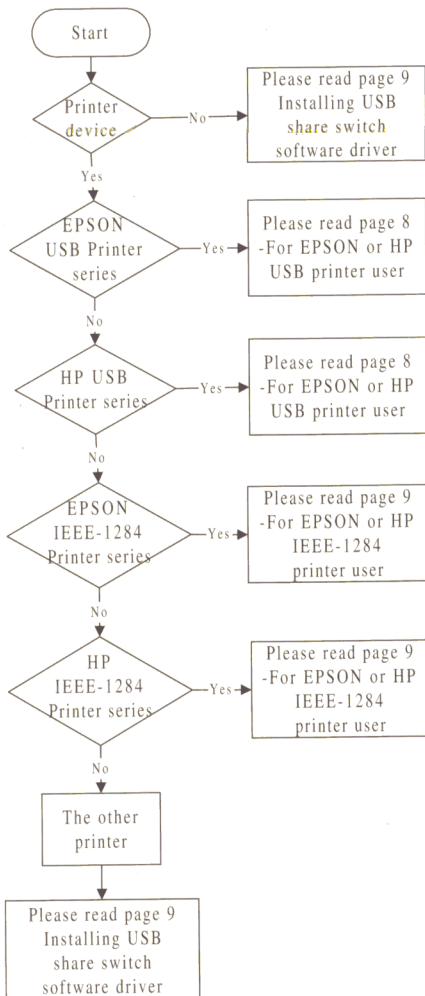
1. Power on PCs and boot Windows O.S. ready
2. Before you are going to PNP (Plug and Play) installation of USB share switch, please study software installation first. After you have studied and understood your situation, you start connecting the USB A-B cable between PCs and Intelligent USB Share Switch. And then power on intelligent USB share switch.
3. Connect USB devices to the USB device port of Intelligent USB Share Switch.

Software Installation

There are two kind of software driver installation procedures below :

1. **Intelligent USB share switch software driver installation**
2. **Printer driver installation only for EPSON or HP USB and IEEE-1284 parallel printer (May not need it, if you don't use printer)**

Before you start to install Intelligent USB Share Switch software driver and printer software driver, please read the following installing procedure or refer to the installing flow chart first.




Note: There is a printer test report file –
“Printer_rep.doc” located at this
CD-ROM or software diskette.


For Epson or HP USB printer user:

There are four kinds of condition you might meet:

- I. If your printer software driver (EPSON, HP) has not been installed into your PC yet. You can skip this procedure. And now, you can go” procedure V “. (See page 9)
- II. If your printer software driver (EPSON, HP) has already existed in your PC, please uninstall printer software driver first (How to uninstall the existed printer driver, please refer to printer user’s manual). After finishing the un-installation of printer driver, you can go “ procedure I ” installation procedure.
- III. Your printer drivers (EPSON, HP) has already existed in your PC. But, you have not followed user’s manual yet and also installed USB share switch software driver directly into your PC already.

Please move the mouse to USB Share Switch icon  which located at icon tray and right click to select “ Printer “. You will get a window and deselect “ Epson printer series“ or “ HP printer series “ item (based on what kind of printer brand name which you use)→ Click O.K. button → Reboot computer (Software Reboot)→ Uninstall USB printer driver → Uninstall USB Share Switch driver(Please use My Computer → Control Panel→ Add/Remove programs to remove USB share switch driver --- USB Share Switch and Win9.X Windows printing systems). After finishing the un-installation procedure, you are in “ procedure I “ situation. You can go “ procedure I ” procedure again.


- IV. If you follow “ procedure I “ already and you would like to uninstall them, please follow the procedure below:

Please move the mouse to USB share switch icon  which located at icon tray and right click to select “ Printer “. You will get a window and deselect “Epson printer series“ or “ HP printer series “ item (based on what kind of printer brand name which you use) → Click O.K. button → Reboot computer (Software Reboot) → Uninstall USB printer driver → Uninstall USB Share Switch driver (Please use My Computer → Control Panel→ Add/Remove programs to remove USB share switch driver --- USB Share Switch and Win9.X Windows printing systems).


For Epson or HP IEEE-1284 printer user:

There are four kinds of condition you might meet:

- I. If your printer software driver (EPSON, HP) has not been installed into your PC yet. You can skip this procedure. And now, you can go “ procedure V “.
- II. If your printer software driver (EPSON, HP) has already existed in your PC, please uninstall printer software driver first (How to uninstall the existed printer driver, please refer to printer user’s manual). After finishing the un-installation of printer driver, you can go “ procedure I ” installation procedure.
- III. Your printer drivers (EPSON, HP) have already existed in your PC. But, you have not followed user’s manual yet and also installed USB share switch software driver directly into your PC already.

Please move the mouse to USB Share Switch icon  which located at icon tray and right click to select “ Printer “. You will get a window and deselect “ Microsoft STD USB Printer “ item → Click O.K. button → Reboot computer (Software Reboot)→ Uninstall printer driver → Uninstall USB Share Switch driver(Please use My Computer → Control Panel→ Add/Remove programs to remove USB share switch driver --- USB Share Switch and Win9.X Windows printing systems). After finishing the un-installation procedure, you are in “ procedure I “ situation. You can go “ procedure I ” again.

- IV. If you follow up “ procedure I. “ already and you would like to uninstall them, please follow the procedure below:

Please move the mouse to USB share switch icon  which located at icon tray and right click to select “ Printer “. You will get a window and deselect “Microsoft STD USB Printer “ item → Click O.K. button → Reboot computer (Software Reboot) → Uninstall printer → Uninstall USB Share Switch driver (Please use My Computer → Control Panel→ Add/Remove programs to remove USB share switch driver --- USB Share Switch and Win9.X Windows printing systems).

- V. After finishing mentioned-above process (**For Epson or HP USB printer user or For Epson or HP IEEE-1284 printer user**) , please go the following final installations.

1. Installing USB Share Switch software driver

- a. Please insert the CD-ROM or software diskette into your CD-ROM drive or software diskette drive respectively.
- b. To connect USB share switch to your PC
- c. This brings up the add new hardware wizard, which searches USB share switch software drivers. Please click [NEXT] [NEXT] and assign the software driver path to CD-ROM drive or software diskette drive.

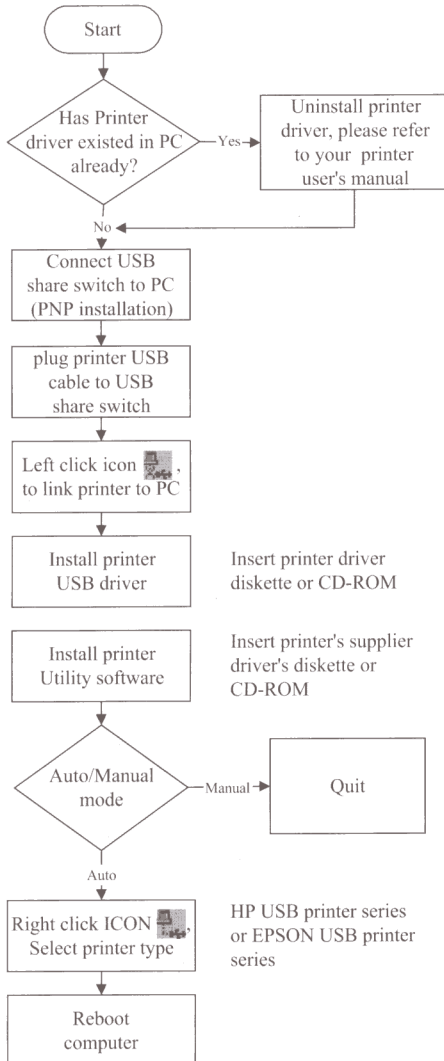
- d. After finishing the installation, there is a new icon exists at icon tray (at the right down corner).

2. Installing printer software driver flow chart

Note: May not need it, if you don't use printer

- a. For Epson or HP USB printer user:

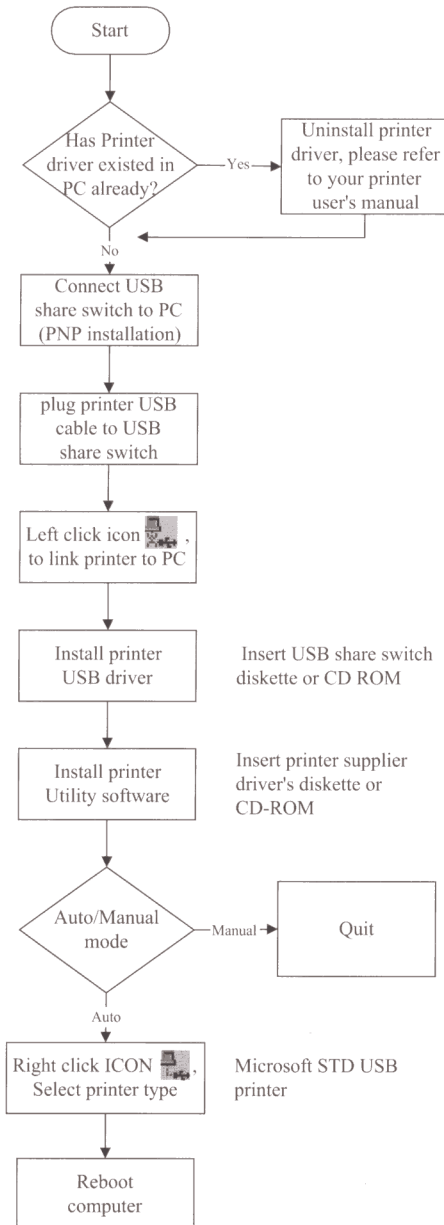
How to install HP or EPSON Printer Driver



Please refer to the installation procedure of printer user's manual

b. For Epson or HP IEEE-1284 printer user:

How to install HP or EPSON IEEE-1284 Printer Driver



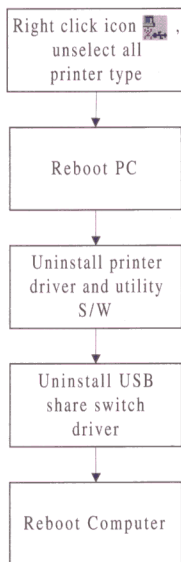
Please use Intelligent USB switch native IEEE-1284 software driver. (Note: it means that don't need printer supplier's printer software driver and Intelligent USB share switch supply you necessary native IEEE-1284 software driver already) When PC brings a hardware wizard, please choose the software driver path to Intelligent USB share switch CD-ROM or Software diskette. After install USB printer driver. The system will bring a hardware wizard again to install printer utility program. Please refer to the installation procedure of printer user's manual.

Software Uninstallation

How to uninstall Intelligent USB share switch software driver and printer driver :

In general drivers should be unloaded using "control panel→ ADD/REMOVE programs ".

How to uninstall HP or EPSON Printer Driver



1. Please use printer supplier's uninstall program to uninstall HP or EPSON printer driver.
2. Please click your mouse to follow up the procedures to remove the intelligent USB share switch software drivers :
My Computer → Control Panel→ Add/Remove programs, then select “ USB Share Switch “ to delete this software drivers -- USB Share Switch & Win9.X Windows printing systems and reboot the computer again.

Usage

When you would like to use USB device ports, using selection icon to switch PC port.


Icon Indications:

- A. Connect USB Share switch to PC
This brings up the add new hardware wizard (First connection), which searches USB Share switch software drivers. Please refer to software installation.
- B. After finishing installation, there is an icon exists at the right down corner.
There are five kinds color of icon might exist in your PC:

I. USB device ports free icon 

II. Construction icon 

III. On Line icon 

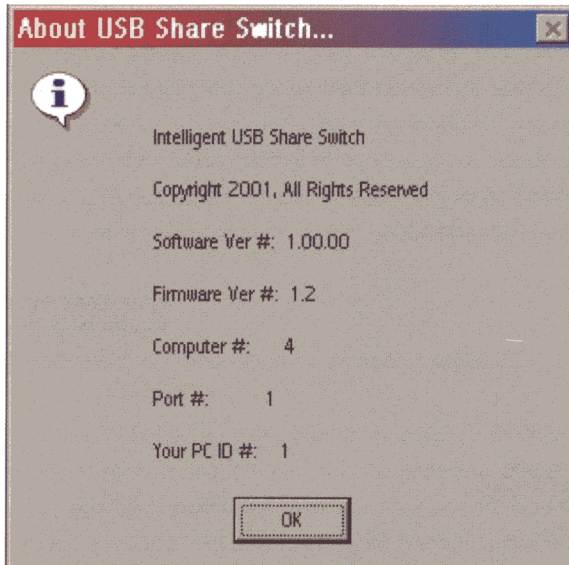
VI. Current PC occupies USB Devices icon  or  or  or 

Example: This icon  means that computer 2 is using USB device ports now.

V. Missing USB Share Switch icon 

There are three kind of menus when right clicking mouse:

1. About (Indicates Software version, Firmware version, Computer No., Hub No. and current PC ID No.)



2. Exit (USB Share Icon exits from Icon Tray)
3. Printer Hook (Select) / Un-Hook (Deselect) printer driver type



There are two kind of modes for your selections. One is Auto Mode and the other is manual mode.

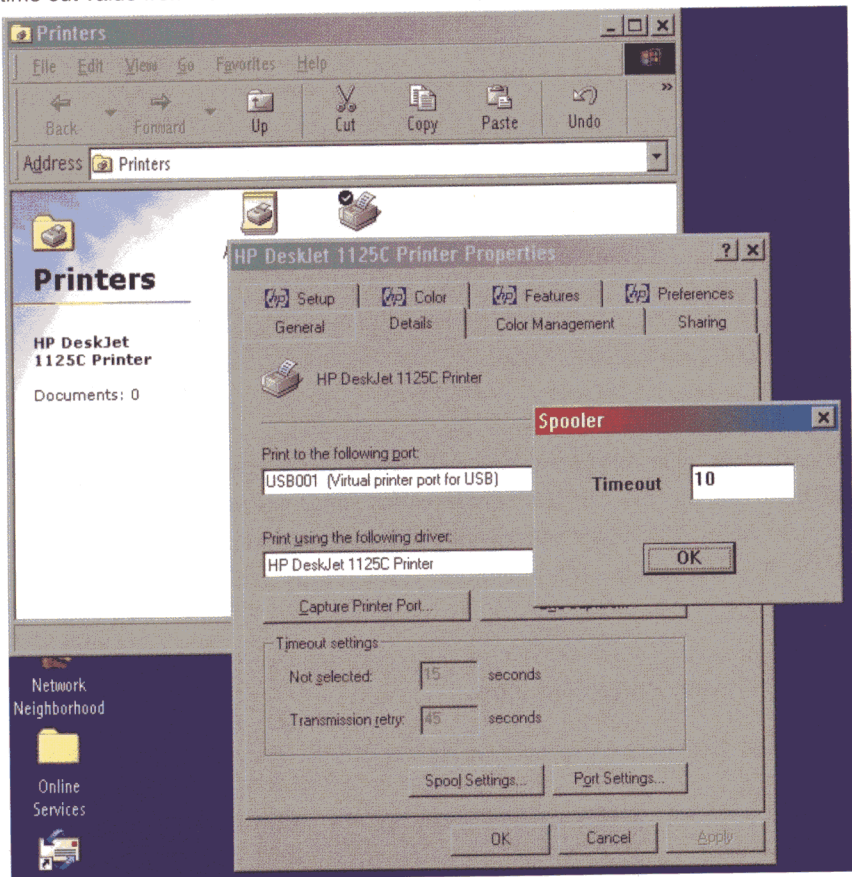
Note: Before select Auto mode, Please install your printer drivers first.

a. Auto Mode :

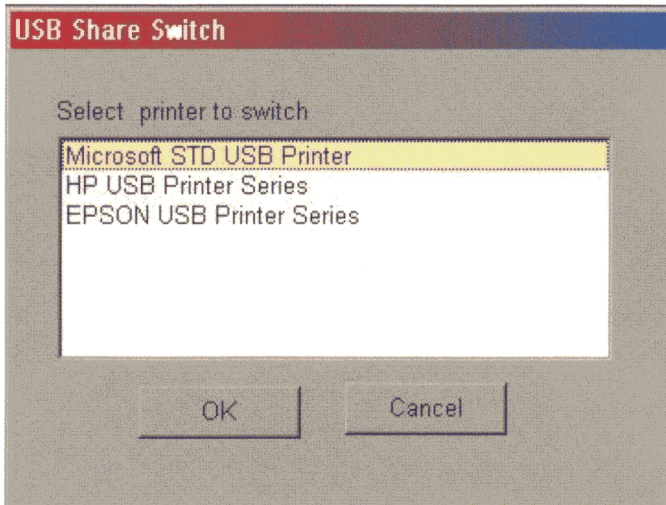
Auto mode means that when you send a print job to the printer, Intelligent USB share switch will link printer device to your PC automatically. After the print job is sent to printer completely, Intelligent USB share will disconnect printer automatically from your PC and it is waiting for next print job from one of PCs.

The auto disconnect timer depend on the printer's properties setting. Please right click printer icon → Details → port setting → Timeout. (Note: Timeout control is to make

sure the print job is sent to the printer from printer buffer completely. The USB share switch will wait a period of time out time and then disconnect this PC port for waiting next coming print job. The factory default time out is 10 seconds. You can define yours time out value from 10 seconds to 998 seconds.)



There are three kinds of printer drivers (Standard (STD), Epson series, HP series) exist in the pop up window. Please select your printer type and click o.k. to confirm it. For example
If your printer is Epson or HP printer, please click respective printer series select bar.
If your printer is IEEE-1284 printer, please click " STD USB Printer " select bar.



b. Manual Mode :

Manual Mode means that when you send a print job to the printer. You must click the ICON to link the PC and USB Share switch. After the print job sent to printer completely. The USB Share switch is continuous connected to the PC.

Note: If you select the manual mode you should deselect the printer driver type.

I. USB Device Ports Free Icon:




All PCs show this icon indicates none of PCs occupies the USB device ports.



USB devices are ready for all PCs. To click left button to select USB device ports. After finishing connection, the free icon will be changed to ON LINE ICON indicates USB device ports are assigned to your PC and USB devices will be hot plugged into your PC at the same time. Your PC will take a short time to get USB device drivers. The more USB devices hot plugged into PC, the more time will be taken for loading software drivers.

II. Construction Icon:



Your PC now is occupying the USB devices and this free icon will be changed to red color connection or green color connection back and forth during connection construction. After finishing construction, you PC will show this on line icon  at your icon tray.

When you Moving the mouse cursor to this icon. It will show “Disconnect” selection. You can select “ Disconnect” to release USB device ports to the other PCs and the icon



will get back to USB device ports free icon  or current PC occupies USB devices icon (i.e. the other PC occupies the USB device ports at the same time, when you release USB device port .).

III. Current PC Occupies USB Devices icon:



PC 1 is connecting to USB devices



PC 2 is connecting to USB devices



PC 3 is connecting to USB devices



PC 4 is connecting to USB devices

The USB device ports are currently used by the other PC and the no. means that which PC is connected to USB device ports now. If you would like to use USB device ports, just move cursor to “ current PC occupies USB devices icon “and click the left button. USB share switch will send request message to the on line PC and ask this PC to release USB device ports to you right away or remind this PC to release USB device ports to you in short time.



IV. Missing USB Share switch icon:



When the USB share switch is removed out from your PC or your PC is disconnected to this switch or the USB cable is lost , you will see a “ Missing USB Share Switch ” icon exists at icon tray. If you move the mouse cursor to this missing icon, it will indicate “ Missing USB Share switch “ message.

Troubleshooting

Ensure that all cables are well seated. Label all of cables with the number for each respective computer to avoid confusion.

1. USB share switch box need work in self power mode. So, please add power adapter to the switch box.
2. If USB device ports are not enough for your USB devices, please add a new USB Hub to one of USB down stream port for getting more USB device ports.
3. The maximum daisy chain levels of USB Hub are 4 levels.
4. When you switch USB device ports to your PC, the Windows will take a little time to upload software driver. Normally, the different USB device has the different upload time. The more connecting USB devices, the more taking upload software driver time.
5. The power jack polarity is center positive and the power adapter must use DC12V , 1A.
6. There are only two kinds of printer --- HP, Epson can work with USB Share Switch Auto mode.
7. If you use Lexmark,Canon printer, please use software manual mode to manage your print jobs.

CERTIFICATIONS

FCC

This equipment has been tested and found to comply with Part 15 of the FCC Rules.

Operation is subject to the following two conditions:

- (1) This device may not cause harmful interference,
- (2) This device must accept any interference received. Including interference that may cause undesired operation.

CE – Certificate

This equipment is in compliance with the requirements of the following regulations: EN 55022: CLASS B



All brand names and trademarks are the registered property of their respective owners